

**MOST URGENT
BY FAX**

No.PDMA(S)/7(45)/2015/
GOVERNMENT OF SINDH
REHABILITATION DEPARTMENT
PROVINCIAL DISASTER MANAGEMENT AUTHORITY (SINDH)
PLOT NO. 26-C, MAIN KHAYABAN-E-JAMI,
DHA PHASE-VII, KARACHI.
Phone: 021-99332003-5, Fax: 021-99332700
Karachi, dated: 1st November, 2019

CYCLONE MAHA ADVISORY - III

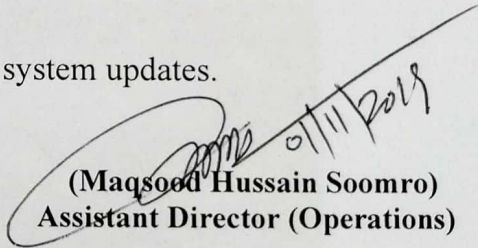
To,

The Commissioner (s)
Karachi, Hyderabad Divisions

SUBJECT: **SEVERE CYCLONIC STORM MAHA IN THE EASTCENTRAL ARABIAN SEA**

I am directed to refer to the subject noted above and to enclose herewith a copy of the Pakistan Meteorological Department Press Release, dated, 1st November, 2019, informing therein that the Severe Cyclonic Storm "MAHA" over the east central Arabian Sea has moved north-northwestwards during last 12 hours and located at 0800 PST of 1st November 2019 around Lat 15.4 N and Long 71.5 E, at a distance of about 1140 km southeast of Karachi with maximum sustained surface winds of 90-110 kmph. TC-Maha is likely to track further northwestwards and intensify into a Very Severe Cyclonic Storm (VSCS) during next 24 hours. Currently there is no threat to Pakistan coastal area. The Tropical Cyclone Warning Center of PMD is regularly monitoring the intensity and track of this Tropical Cyclone.

2. It is therefore requested to please keep abreast of the system updates.


(Maqsood Hussain Soomro)
Assistant Director (Operations)

A Copy for information/necessary action to:

1. The Secretary Fisheries, Govt of Sindh, Karachi.
2. The Secretary Information, Govt. of Sindh, Karachi.
3. The Secretary Local Government Department, Govt. of Sindh, Karachi.
4. The Director (Response), National Disaster Management Authority, Islamabad.
5. The Director (Operations) Pakistan Maritime Security Agency, Karachi.
6. The Head Quarter ComCoast, Karachi.
7. The Head Quarters Engineers, 5 Corps, Karachi.
8. The Chairman DDMA's / Deputy Commissioner (s), Karachi, Badin, Thatta & Sujawal.
9. The Deputy Secretary (Staff) to Chief Minister Sindh, Karachi.
10. The Deputy Secretary (Staff) to Chief Secretary Sindh, Karachi
11. The PS to Secretary Rehabilitation Department, Government of Sindh, Karachi.
12. The PS to Director General, PDMA Sindh, Karachi.

Advisories (4)

Advisory# 4

Issue Date: 1 November, 2019 10:53 AM

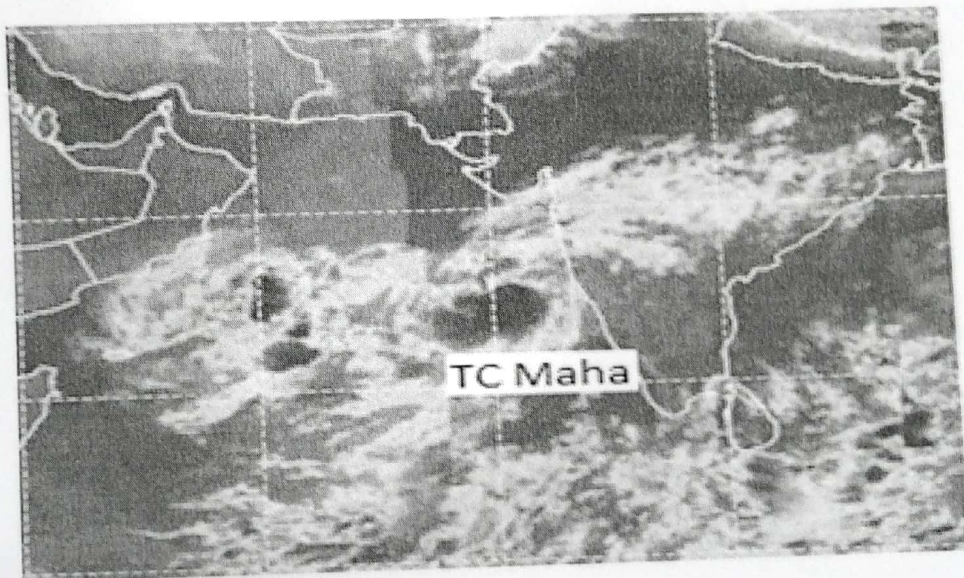
Severe Cyclonic Storm MAHA in the Eastcentral Arabian Sea

The Severe Cyclonic Storm "MAHA" over the eastcentral Arabian Sea has moved north-northwestwards during last 12 hours and located at 0800 PST of 1st November 2019 around Lat 15.4 N and Long 71.5 E, at a distance of about 1140 km southeast of Karachi with maximum sustained surface winds of 90-110 kmph. TC-Maha is likely to track further northwestwards and intensify into a Very Severe Cyclonic Storm (VSCS) during next 24 hours.

Currently there is no threat to Pakistan coastal area. The Tropical Cyclone Warning Center of PMD is regularly monitoring the intensity and track of this Tropical Cyclone.

The concerned authorities are requested to keep them abreast of the system updates through PMD website.

IR Satellite imagery at 0940 PST



Issued By: Tropical Cyclone Warning Centre, Karachi

Advisory# 3

Issue Date: 31 October, 2019 11:22 PM

Cyclonic Storm MAHA in the East central Arabian Sea

The cyclonic storm 'MAHA' over the east central Arabian Sea has moved north-northwestwards during last 12 hours and located at 2000 PST of 31st October, 2019 around Lat 13.3N and Long 72.5E, at a distance of about 1400km southeast of Karachi. TC-Maha is likely to track northwestwards and intensify into a Severe Cyclonic Storm (SCS) during next 24 hours.

Currently there is no threat to Pakistan coastal area. The Tropical Cyclone Warning Center of PMD is regularly monitoring the intensity and track of this Tropical Cyclone.

The concerned authorities are requested to keep them abreast of the system updates through PMD website.